

Company Profile

By

Sterling Corporation



BUSINESS DETAILS

+ **Name of the company** – *Sterling Corporation*

+ **Year of establishment** – *2015*

+ **Address** – *188 Shahid Shangbadik Selina Pervin Sarak, Baro Moghbazar, Ramna, Dhaka – 1217, Bangladesh*

+ **Phone No.** - *+8801795667960, +8801671334718*

+ **Email** – *sami@sterlingbd.net, sami.slc.bd@gmail.com*

+ **Trade License No.** – *03 – 053860 (2015)*

+ **City Corporation** – *Dhaka North*

+ **Bank Information** – *The Premier Bank Ltd.*

+ **Branch** – *Motijheel Branch*

Speech of CEO



To be successful in any endeavor you need to exhibit “passion for excellence”. With this fundamental idea, Sterling Corporation started its journey.

We believe in – supporting environmental construction concept, lower cost, creating green environment, developing excellent supply.

We like to earn your trust giving our best effort to satisfy you. For this regard, please give us a very little chance to show our worth.

Let us avail the opportunity to serve you.

Best Wishes,

Engr. Sami Ullah Majumder

Chief Executive Officer

WHO WE ARE MEET US!!

We, Sterling Corporation, are an entity of unique combination of commitment and quality, specializes in design, fabrication, supply an erection of pre – engineered steel building or structure with required civil construction works in turn key basis widely uses for factories, warehouses, showrooms, commercial / trade centre, super markets, stadiums, exhibition halls and aircraft hangers as well.

And for such, we can also supply the pre – engineered steel buildings material like ms plate, ms pipe, galvanized or ms purlin, high strength nut bolts for connection, color coated sheet for roof and wall, decking sheet for mezzanine floor, insulation, ms chequered plate for steel stair and have the cover the range of supplying the civil works material like ms rod, sand, cement, aggregate, shattering, scaffolding, bricks, thai window, grills etc.

We provide reliable solutions while maintain a relentless focus on commitment and uncompromising standard of quality





VISSION -

For Sterling Corporation, to be recognized as the bench mark in the construction and supply industry. This will be accomplished through product Perfection, engineering excellence and the best customer services in the industry.

MISSION -

To bring the such PEB technology to where it is most needed in the world, and help others “build a better life”, through industrialization; To (jointly) build high capacity, efficient & cost effective steel factories for speedy delivery and for benefiting from “large economies of scale”. To design and fabricate safe and technologically advanced buildings. To offer customers versatility in design & fabrication to meet their exact building requirements. To offer customer services that are second to none in the industry.

VALUES -

- *Be a leader and not a follower.*
- *Share knowledge and success with others.*
- *Forge local alliances wherever you go.*
- *Continually improve your products. Customer service makes all the difference; customers are lifetime partners; always seek a win – win solution.*
- *The longest journey begins with the smallest step, so begin with the end in mind, and focus on the long term, not just the short term.*



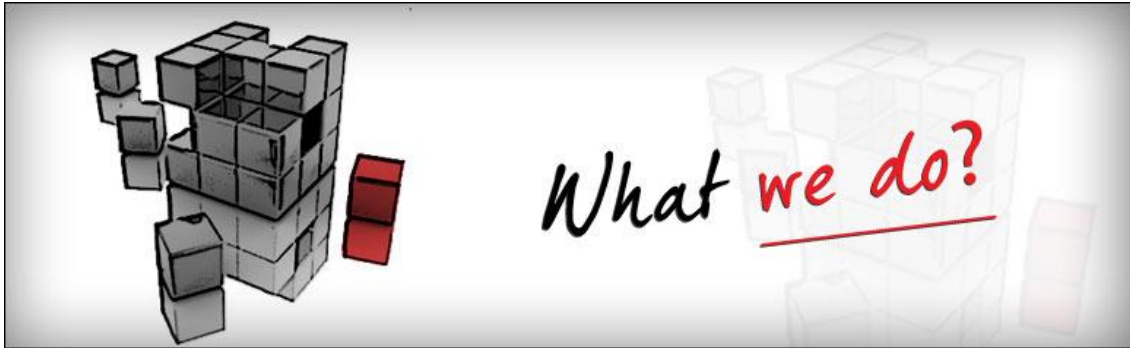
Because we believe in providing quality not just first time, but every time.



We like to – use the latest design and international code for cost effective building design, affordability pricing of materials, quick production, fastest delivery, safety first erection maintaining quickest possible erection time. We have the experienced team, want to keep it simple, can achieve the lowest cost and the culture of innovation, doing the right thing, pursuit of challenge and success, have winning mentality, inclusive meritocracy, trust and team work.

We just not like to say but have courage to lesson and ability to learn from others and from clients too, you can say, we just love new things.

All innovations are inventions, but not all inventions are innovations. An invention is a unique idea which only needs to be proven as workable, while innovation is when that unique idea is easily replicable at an economic cost and satisfy specific needs. We focused on this theme with aim to bring focus on how such important innovations have enabled us to enjoy many significant benefits.



"What do we do?" Is a question that loads our FAQ a lot and we respond to that by saying humbly and yet truthfully that "We do amazing things". Our people do amazing things to help businesses, government, nonprofits and different communities to solve their toughest challenges.

Pre Fabricated Steel Structural Works -

We are expert of solution of the construction of any kind of structure including steel structure with erection and civil works as an turnkey basis. Now in this modern era all factories or companies establish the factory with pre – engineered steel structure and for the establishment steel structure require the foundation which is covered by civil works. We give the solution both pre – engineered steel structure with civil works. We can help the companies like -

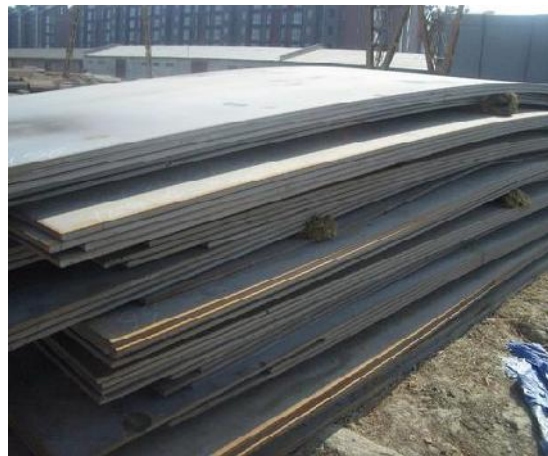
- Garments,
- Pharmaceuticals,
- Cement manufacturer,
- Paper manufacturer,
- Developers,
- Beverages
- Glass manufactures
- Ship Manufacture
- Cables manufactures
- Power plants
- Silo
- Electronic items manufacturer
- Vehicle manufacture
- Etc.

Supply, Trading The Materials -

We import, supply, trading the materials –

- MS Plate :-

Know as mild steel. One of the largest import commodity in our country in many years and a plays a significant part in our economic growth. Vastly consumed as row materials in pre – engineered steel structure works and other works where require steel. We have our trusted importer and thus we supply the raw ms steel plate in “ASTM Standard” as prime quality 50 grade and secondary quality 40 grade as per client requirement, mostly imported from Japan and China.



- ***Hot Rolled H And I Beam :-***

Hot rolled beam is where there is no use of welding for making of I or H girder. These girder made in purely by machine in standard size and length. Also imported in "ASTM standard" as prime quality 50 grade and 40 grade as per clients requirement imported from Japan and China



- ***Nut Bolts :-***

High strength electroplating galvanized nut bolts used as connection bolt in column joint and beam joint in any pre – engineered steel structure. Imported from China, prime quality obviously, grade 8.8, ASTM standard 933 Bolts 934 nut and washer also. As per design their various sizes in nut bolts, however we can supply the following sizes –

- M12 x 25mm
- M12 x 30mm
- M16 x 65mm
- M16 x 80mm
- M20 x 50mm
- M20x 60mm
- M20 x 80mm
- M20 x 100mm
- M24 x 100mm



- ***MS PIPE:-***

MS pipe, ms tube refers to mild steel pipe or mild steel tubes used for industrial and domestic use. High quality imported and ship breaking ms pipe in the market. Varies in diameter and thickness with length required by as per clients asking.



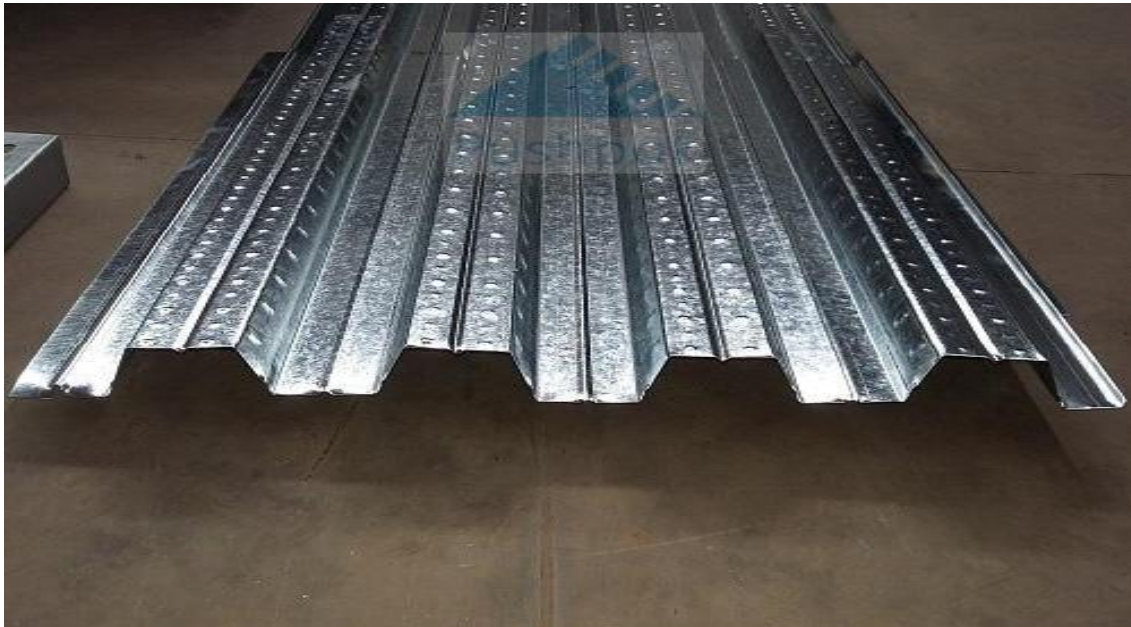
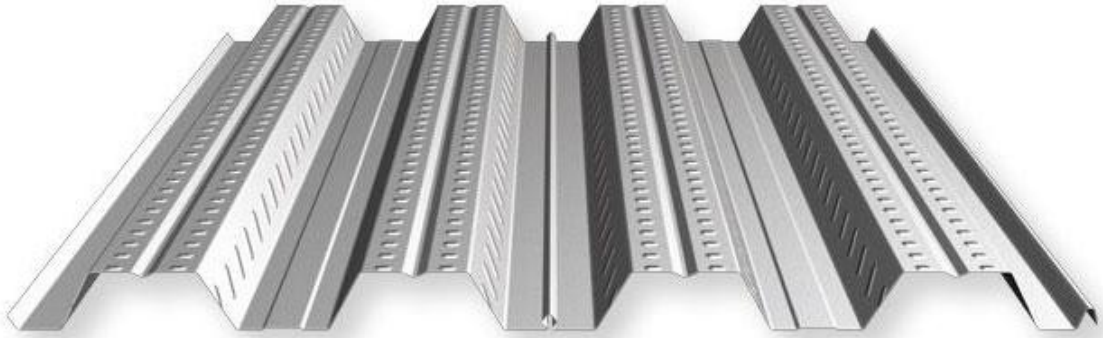
- ***Color Coated Sheet :-***

PPGI is pre-painted galvanized iron, also known as pre-coated steel, coil coated steel, color coated steel etc., typically with a hot dip zinc coated steel substrate. The coil coating process may be used for other substrates such as aluminum, or aluminum, stainless steel or alloy coated steel other than "pure" zinc coated steel. However, only "pure" zinc coated steel is typically referred to as PPGI. For example, PPGL may be used for pre-painted 55%Al/Zn alloy-coated steel (pre-painted GALVALUME(r) steel*). We only import, trading and supply of Tata Bluescope sheets from India (AZ – 150 gsm, G – 550) thickness of 0.47mm.



- ***Galvanized Sheet Or Decking Sheet :-***

These galvanized sheet used in mezzanine floor in the multistoried pre – engineered steel structure imported from Taiwan, Japan, China and India. Thickness available from 0.60mm to 0.75mm but there is 1.00mm thick decking which is special requirement for designer and not frequently available.



CIVIL CONSTRUCTION MATERIAL:-

A part from pre – engineered steel building material, we can supply the materials of civil construction so that we enhanced our hand for helping our customer.

Materials are –

- Cement
- Auto bricks,
- Stone
- Sand
- Brick chips
- Reinforcement bar
- Shuttering (Steel / Wood)
- Paint
- Etc.



www.shutterstock.com - 294760910



Imported / Sourcing Companies:-

Below imported association enhance our journey. However, a trailblazer, we always seeking for more association which will improve our service and continue to introduce new concepts, materials and ideas.



Client List:-

With so many journey ahead, we just met and give service to these clients so far who will speak for us -





“Please have a cup of tea with us”

Contact Details:-

*188, Shahid Shangbadik Selina Pervin Sarak,
Baro Moghbazar, Ramna,
Dhaka – 1217, Bangladesh.*

*Email :- < sami@sterlingbd.net >
< sami.slc.bd@gmail.com >*

Phone :- +8801795667960, +8801671334718